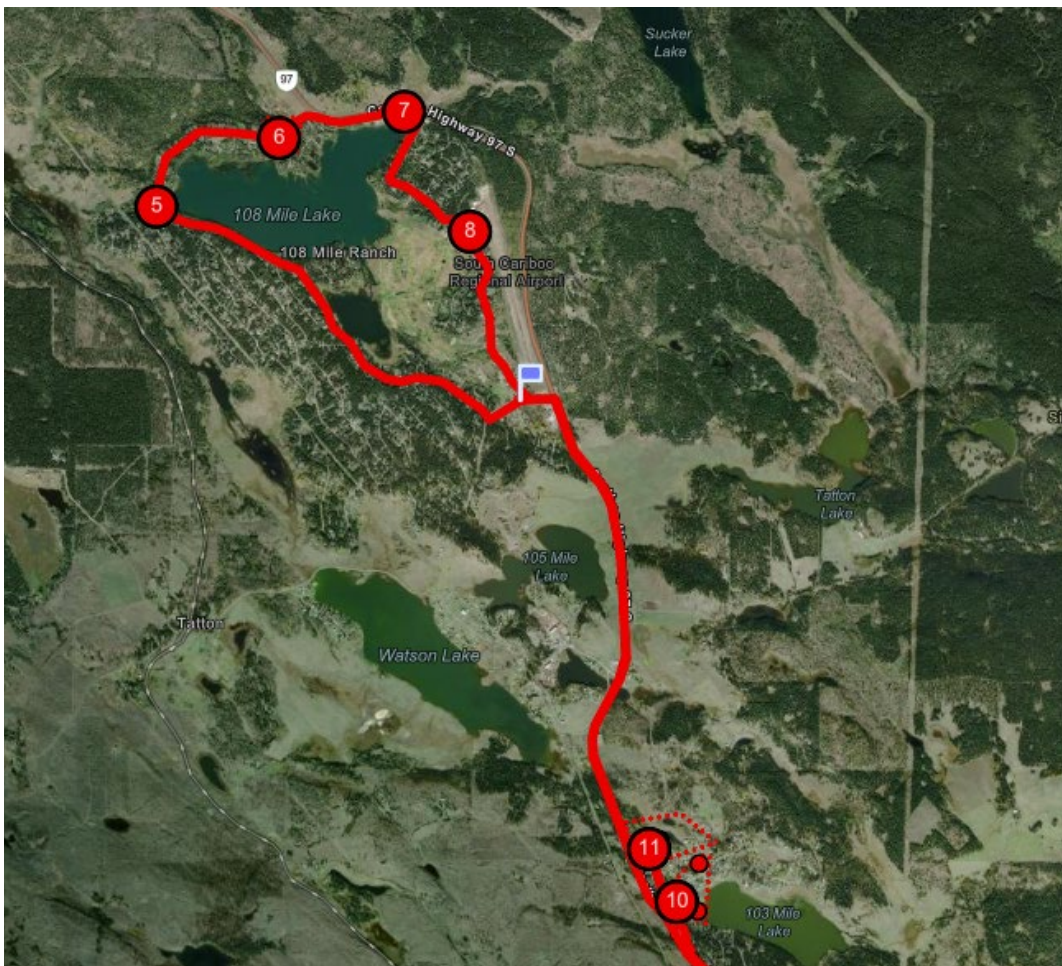


Changes to bus routes for the upcoming school years, all other bus routes will be the same as last year.

100 Mile Route changes

Route 45- 108 Mile – Telqua – 100 Mile House

- Stop 2: PSO – pick up SoC students - **7:40 AM**
- Stop 3 & 10: 103 Mile Lake Rd & Park Drive
 - Stop 3 – Mile 108 students - **7:45 AM**
 - Stop 10 - Town students - **8:11 AM**
- Stop 4 & 11: Park Drive
 - Stop 4 – Mile 108 students - **7:47 AM**
 - Stop 11 – Town students - **8:13 AM**
- Stop 5: Kitwanga Drive- Parking lot – **7:55 AM**
- Stop 6: Chilcotin Crescent & Kitwanga Drive – **7:57 AM**
- Stop 7: 108 Heritage Site – **7:59 AM**
- Stop 8: Airport - **8:01 AM**
- Stop 9: Mile 108 Elementary – **8:06 AM**



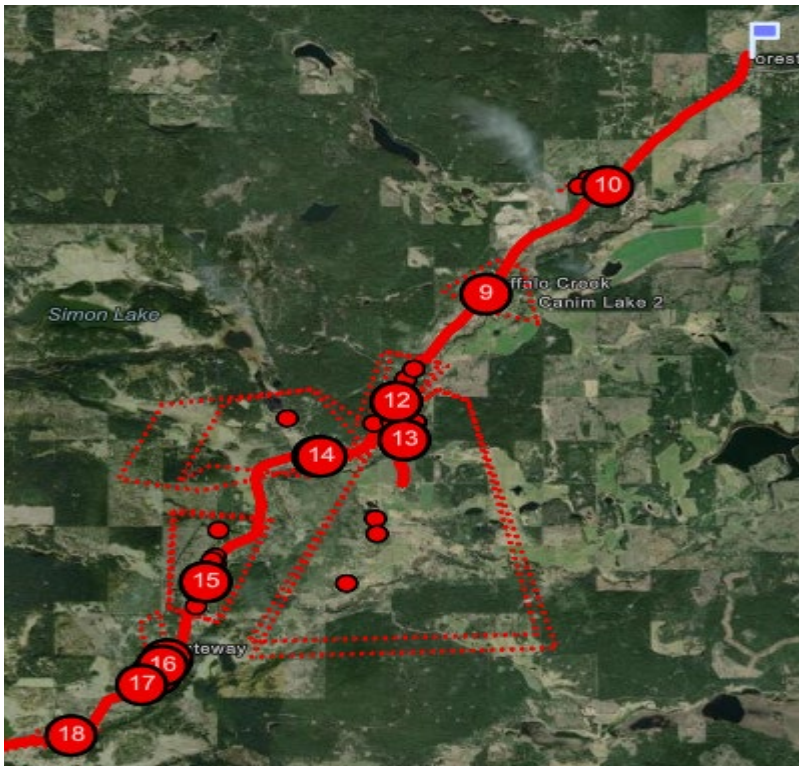
Route 46 - Lac La Hache - 100 Mile House

- Stop 2: Co-op – **6:35 AM**
- Stop 3 & 12:
 - Stop 3 - 3727 Hwy 97 (Canco) – **7:07 AM**
 - Stop 12 – Hwy 97 & Kokanee Bay Rd – **7:33 AM**
- Stop 4 & 9:
 - Stop 4 – 3627 Hwy 97 (blue fence) – **7:09 AM**
 - Stop 9 – Gunn Rd & Hwy 97 (across from blue fence) – **7:30 AM**
- Stop 5: Maze Lake Transfer **7:20 AM**
- Stop 6: Hwy 97 & Wright Station Rd T/A – **7:24 AM**
- Stop 7: Hwy 97 & Dunsmuir Rd – **7:26 AM**
- Stop 8: Hwy 97 & Olafson Rd – **7:28 AM**
- Stop 10: Shoreline Resort – 3664 Hwy 97 – **7:31 AM**
- Stop 11: Hwy 97 & Doyle Rd - **7:32 AM**
- Stop 13: Dodge Rd (south mailboxes) – **7:38 AM**
- Stop 14: Emerald Cres & Emerald Crt – **7:43 AM**
- Stop 15: Lac La Hache Elementary – **7:51 AM**
- Stop 16: Hwy 97 & Felker (by gas station) – **7:54 AM**
- Stop 17: Hwy 97 & McKinley Dr – **7:56 AM**



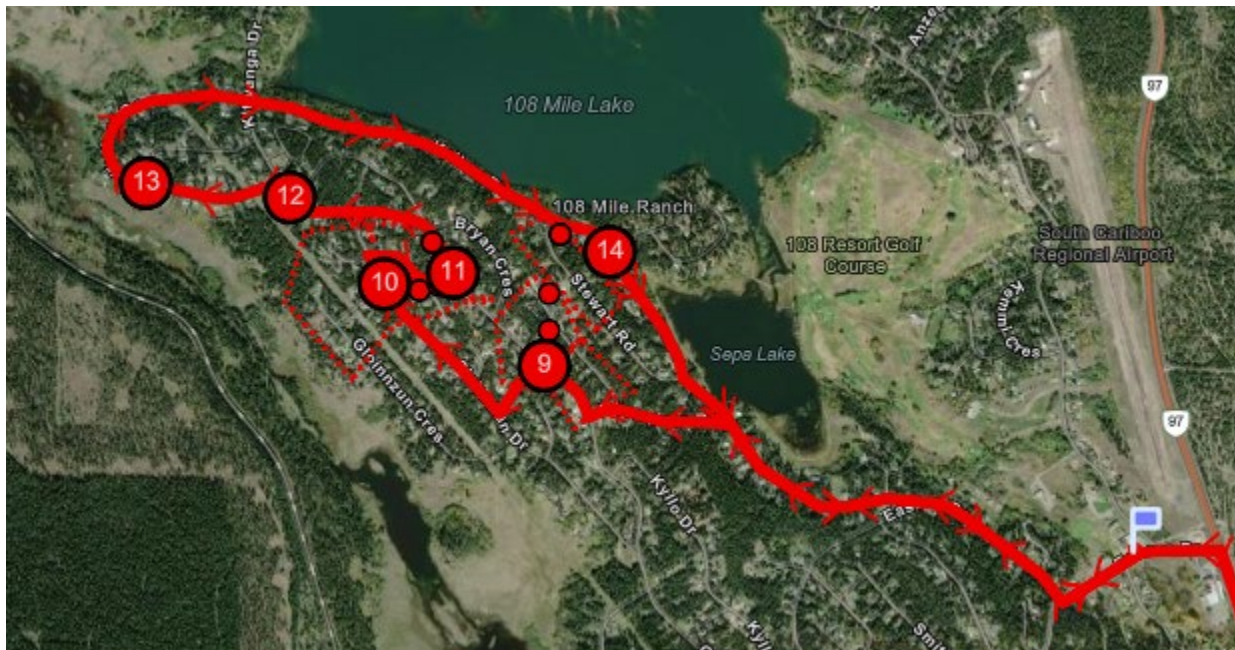
Route 47 – Houseman Rd - Buffalo Ck - 100 Mile House

- Stop 2: 100 Mile Elementary SoC pick up – **7:25 AM**
- Stop 3: 5661 Canim Hendrix Lake Rd – Forest Grove Elem. students - **7:32 AM**
- Stop 4: 5621 Canim Hendrix Lake Rd – Forest Grove Elem. students – **7:33 AM**
- Stop 5 & 15: Kennedy Rd & Geraldine Rd
 - Stop 5 –Forest Grove Elem. students – **7:35 AM**
 - Stop 15 – Town students – **8:19 AM**
- Stop 6 & 14: 5282 Canim Hendrix Lk Rd – Old Buffalo Creek School
 - Stop 6 – Forest Grove Elem. students– **7:40 AM**
 - Stop 14 – Town students – **8:14 AM**
- Stop 7 & 13: Houseman Rd & Lower Houseman Rd T/A
 - Stop 7 – Forest Grove Elem. students – **7:43 AM**
 - Stop 13 – Town students – **8:11 AM**
- Stop 8 &12: 5126 Perkins Rd
 - Stop 8 – Forest Grove Elem. students – **7:46 AM**
 - Stop 12 – Town students – **8:08 AM**
- Stop 9: Buffalo Creek Rd & Canim Hendrix Lake Rd – Forest Grove Elem. students – **7:50 AM**
- Stop 10: Archie Meadown Rd & Canim Hendrix Lake Rd & Valleyview Rd – Forest Grove Elem. Students - **7:53 AM**
- Stop 11: Forest Grove Elementary – **8:00 AM**
- Stop 16: Canim Hendrix Lake Rd & Birchwood Rd – Town Students - **8:22 AM**
- Stop 17: 5674 Canim Hendrix Lake Rd – Town students – **8:23 AM**
- Stop 18: 5776 Canim Hendrix Lake Rd – Town students – **8:24 AM**



Route 51 – 108 Mile – Kallum Loop – 100 Mile

- Stop 2 & 9: Kitwanga Dr & Meesquono Trail
 - Stop 2 – Mile 108 students – **7:40 AM**
 - Stop 9 – Town students – **8:07 AM**
- Stop 3 & 10: Gloinnzum Cres & Gloinnzun Dr
 - Stop 3 – Mile 108 students – **7:42 AM**
 - Stop 10 – Town students – **8:10 AM**
- Stop 4 & 11: Kitwanga Dr & Chintu Dr
 - Stop 4 – Mile 108 students – **7:44 AM**
 - Stop 11 – Town students – **8:11 AM**
- Stop 5 & 12: Kitwanga Dr & Mackay Cres (2nd intersection)
 - Stop 5 – Mile 108 students – **7:47 AM**
 - Stop 12 – Town students – **8:14 AM**
- Stop 6 & 13: Kallum Dr & Davis Rd
 - Stop 6 – Mile 108 students - **7:50 AM**
 - Stop 13 – Town students - **8:16 AM**
- Stop 7 & 14: Kallum Dr & Annaham Cres
 - Stop 7 – Mile 108 students – **7:53 AM**
 - Stop 14 – Town students – **8:20 AM**
- Stop 8: Mile 108 Elementary- drop off Mile 108 students and pick up town students **8:01 AM**



Route 57 – 108 Mile – Easzee – 100 Mile

- Stop 2 & 6: Mein Rd
 - Stop 2 – Mile 108 students & SoC students – **7:45 AM**
 - Stop 6 – Town students – **8:08 AM**
- Stop 3 & 7: Gloinnzum Dr & Gloinnzun Cres
 - Stop 3 – Mile 108 students & SoC students – **7:49 AM**
 - Stop 7 – Town students – **8:14 AM**
- Stop 4 & 8: Kitwanga Dr & Thompson Rd
 - Stop 4 – Mile 108 students & SoC students – **7:51 AM**
 - Stop 8 – Town students – **8:16 AM**
- Stop 5: Mile 108 Elementary – Drop off all Elem & pick up SoC – **8:03 AM**



Williams Lake Route changes

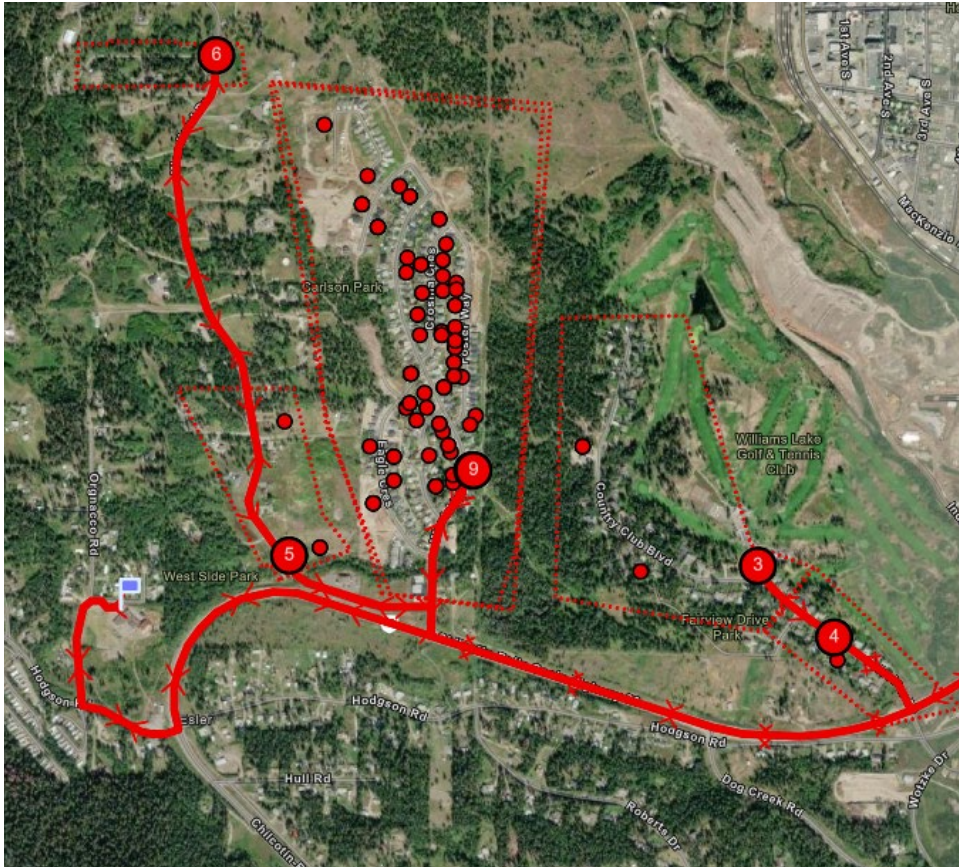
Route 8 – South Lakeside Drive to Town schools

- Stop 2: 1765 South Lakeside Drive – **7:50 AM**
- Stop 3: 1953 South Lakeside Drive **7:53 AM**
- Stop 4: Russet Bluff – Mailboxes **7:54 AM**
- Stop 5: 1806 South Lakeside Drive – **8:06 AM**
- Stop 6: Renner Road – **8:10 AM**
- Stop 7: Birch Hill – **8:13 AM**
- Stop 8: Paxton Rd – **8:14 AM**
- Stop 9: 1405 South Lakeside – **8:15 AM**



Route 25 – Wms Lake – Golf Course – Woodland - Westridge

- Stop 2: Lake City Secondary SoC pick up – **7:32 AM**
- Stop 3: Golf Course – Pick up Chilcotin Road students – **7:40 AM**
- Stop 4: 51 Fairview Drive – **7:41 AM**
- Stop 5: 44 Woodland Drive – **7:42 AM**
- Stop 6: 393 Woodland Drive T/A – **7:47 AM**
- Stop 7 & 9: Westridge Dr Bus Stop T/A
 - Stop 7 –Chilcotin Road students – **7:50 AM**
 - Stop 9 – Town students – **8:03 AM**



Route 35 – South Lakeside Drive to Chilcotin Road Elementary

- Stop 2: 1949 South Lakeside Drive – **7:37 AM**
- Stop 3: Russet Bluff – Mailboxes - **7:40 AM**
- Stop 4: 1716 South Lakeside Drive – **7:50 AM**
- Stop 5: Renner Road – **7:54 AM**
- Stop 6: Birch Hill – **7:55 AM**
- Stop 7: Paxton Rd – **7:56 AM**

